



SIKA AT WORK

SIKA FLOOR OR WORK OF ART?

MEDICUS, WROCŁAW, POLAND

SIKA TECHNOLOGIES: Decorative floors: Sika® ComfortFloor®,
Floors in technical facilities:
Sikafloor®-264, Sikafloor®-2540 W,
Car park floors: Sikafloor®-350 N Elastic,
Sealing materials: Sikaflex® PRO-3

BUILDING TRUST



IMPROVING COMFORT OF PATIENTS BY IMPRESSIVE INTERIOR DESIGN IN MEDICUS CLINIC

MEDICUS CENTRE BUILDING located at Strzelecki Square in Wrocław combines medical and office facilities. This four-storey building with usable area of almost 7,000 m² is a modern healthcare centre with a laryngological clinic (Medicus Clinic) and a clinic of aesthetic medicine & plastic surgery (Self Medicus). The first floor is intended for medical practices, while the second floor is designed as a hospital ward with the operating block. The building is also used as headquarters of Medicus Expert company, which offers medical equipment and hearing aids. There is also a cafeteria, car park and administrative/office facilities. Patients enjoy a comfortable environment as the building has an extraordinary interior design. Standard floors have been replaced by works of art designed by Jeanet Hönig, a well-known artist of functional art. Beautiful patterns, referring to the structure and function of the building, create a unique interior finish, giving the rooms a unique character and improving the emotional comfort of patients.



PROJECT REQUIREMENTS

Each room required a proper floor, that would meet functional requirements, ensuring also good interior aesthetics, especially in commercial buildings, where large floor areas are often the most prominent and decorative element of the space. The investor expected seamless floors with an attractive design which would be easy to maintain.

An important element in selecting the flooring solutions was also a need for soundproofing of floors, in order to reduce the noise generated in the medical centre, which focuses on hearing tests and treatment. It was decided to use an unusual decorative solution in the form of functional art.

A specific structure of the building (oval shape with open space that runs through all floors) required additional work related to securing the floor during installation. Another challenge was the need to ensure a safe walking on the uncured resin floor during the installation of artistic works.



Decorative floor system Sika Comfortfloor® provide unlimited design possibilities with their wide range of solutions that can turn ordinary facilities into unique and inspirational spaces. They meet individual requirements of investors, designers and users. These flexible and comfortable floors are available in a wide range of colours and surface finish. They ensure low emissions and meet the fire resistance requirements. Their smooth and seamless surface ensures easy maintenance and cleaning, which is extremely important in medical care facilities.

ENDLESS DESIGN POSSIBILITIES WITH SIKA COMFORTFLOOR®

DECORATIVE FLOORS

MEDICUS centre has a decorative flooring system of approx. 4000 m², almost 1000 m² of which was turned into a work of art. It is the largest project of this type in Europe. It was created with **Sika ComfortFloor® Decorative Pro** in two versions that ensured proper floor acoustic properties that reduce noise and footstep sounds, meeting the requirements of the investor.

The surface of approx. 1000 m² was covered with a functional work of art designed by floor artist and designer, **JEANET HÖNIG**:

- primer: **Sikafloor®-161**
- adhesive: **Sikafloor®-Comfort Adhesive**
- rubber mat: **Decorative Regupol 4580**
- pore filling: **Sikafloor® Comfort Porefiller**
- basic floor layer: **Sikafloor®-3000** a two-component, aliphatic, solvent-free, flexible, self-levelling polyurethane coating with a very low VOC emissions, UV-resistant.
- sealing layer: **Sikafloor®-304 W** a two-component, matt, transparent polyurethane resin with good UV resistance and easy to clean.

On other surface of approx. 3000 m², the following system was used:

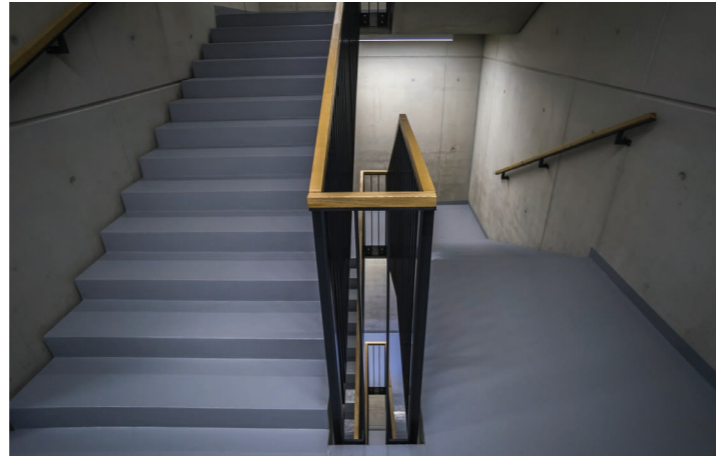
- primer: **Sikafloor®-161** - a two-component epoxy resin with a good penetration capability and high adhesion to the substrate with fast curing properties.
- adhesive: **Sikafloor®-Comfort Adhesive** a two-component, solvent-free polyurethane adhesive for bonding rubber mats.
- rubber mat: **Decorative Regupol 4580** for impact and sound damping, flexible and prefabricated.
- pore filling: **Sikafloor® Comfort Porefiller** a two component, solvent free polyurethane material for sealing and levelling substrates.
- basic floor layer: **Sikafloor®-330** a highly flexible, two-component polyurethane resin, allowing to transfer substrate features, damping the sounds of steps, with good mechanical resistance.
- closing layer: **Sikafloor®-305 W** a two-component, matt, colour polyurethane resin with good UV resistance and durable colours, easy to clean.



DURABLE SIKA FLOOR SYSTEMS IN A WIDE RANGE OF COLOURS

STAIRCASES AND TECHNICAL FACILITIES

Sika floors were used also in other areas of the building. The staircases were finished with **Sikafloor®-264** - a two-component, colour epoxy coating installed on **Sikafloor®-161** primer. For technical rooms the designers decided to use **Sikafloor®-2540 W** - a low-emission, water-soluble, colour coating based on epoxy resin.



UNDERGROUND CAR PARK

Sika floor systems for car parks protect the concrete structure against the penetration of water and de-icing salt. They may be installed with a non-slip surface and have good resistance to abrasion and mechanical stress. With a wide range of colours they provide unlimited design possibilities for surface of parking spaces.

In MEDICUS building, the area of approx. 1200 m² of the underground car park was covered with a non-slip flooring system meeting the requirements of OS-11B:

- primer: **Sikafloor®-161** a two-component epoxy resin
- basic layer: **Sikafloor®-350 N Elastic** - a two component polyurethane resin, economical and with high mechanical resistance.
- topping: silica sand,
- closing layer: **Sikafloor®-378 N** - a two-component, hard & flexible, coloured, epoxy seal layer.

The entrance ramp to the car park was covered with a non-slip floor system:

- primer: **Sikafloor®-161** a two-component epoxy resin
- basic layer: **Sikafloor®-375 N** - a two-component, hard & flexible polyurethane material, crack bridging.
- topping: silica sand,
- closing layer: **Sikafloor® 359** - a two-component, hard & flexible, coloured, polyurethane seal layer.

Floor gaps were filled with **Sikaflex PRO-3** gap filler, having a high mechanical resistance.



TECHNICAL SUPPORT

SIKA SPECIALISTS PROVIDED TECHNICAL ASSISTANCE AT EVERY STAGE OF THE PROJECT.



PROJECT PARTICIPANTS

Owner: Medicus

Investor: Medicus

Project: JSK Architekci

Main contractor: Alfa Dach

Subcontractor: Arpox

Sika Poland: Paweł Marczyński, mobile. +48 603660751

Our most current General Sales Conditions shall apply.
Please consult the Data Sheet prior to any use and processing



SIKA POLAND SP. Z O.O.
ul. Karczkowska 89
02-871 Warszawa

Contact:
Phone: +48 22 31 00 700
Fax: +48 22 31 00 800
www.sika.pl

